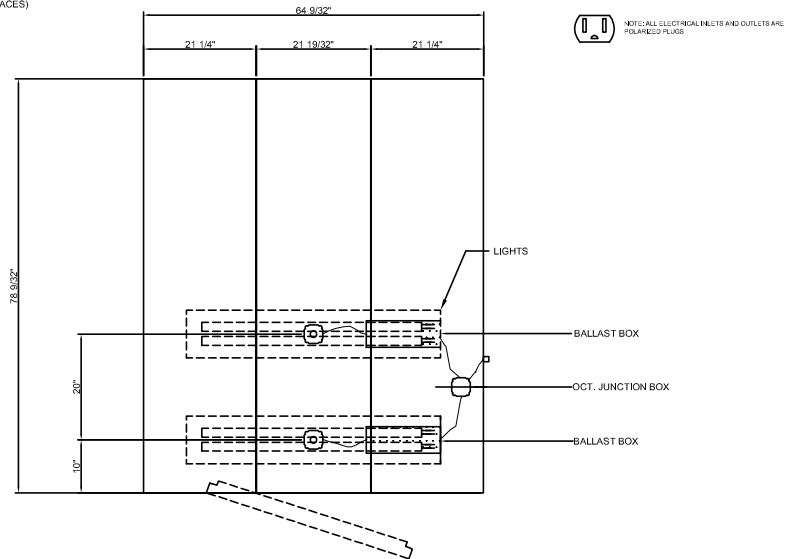
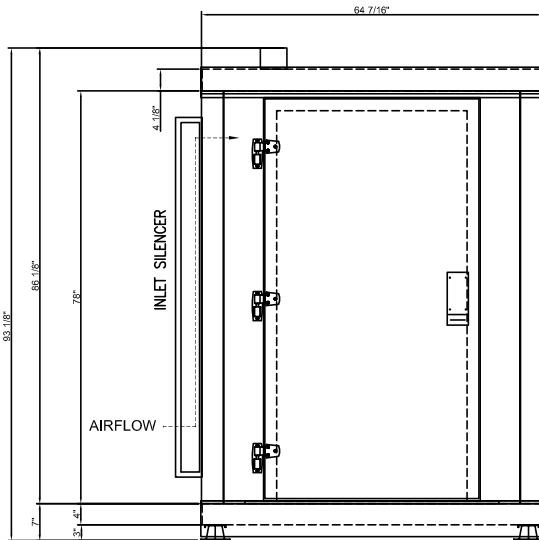


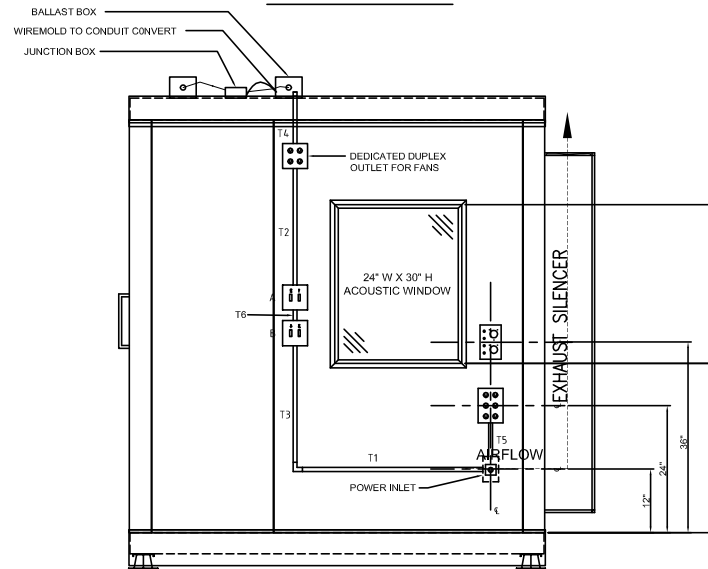
PLAN VIEW



CEILING PANELS



FRONT ELEVATION



WINDOW SIDE ELEVATION

DRAWING APPROVAL

- ☐ APPROVED
- ☐ APPROVED AS NOTED
- ☐ REVISE AND RESUBMIT

DATE: _____

PER: _____

NON-STANDARD FEATURES:

- THE WALL & CEILING CONSTRUCTION HAVE BEEN MODIFIED TO MEET THE NRC STANDARD OF 0.60 TO 0.70
- 36"W x 73 1/2"H R.H.H. CLEAR OPENING DOOR
- 24"W x 30"H DOUBLE-GLAZED ACOUSTIC WINDOW
- 4" THICK FLOOR C/W 3" RD-3 ISOLATORS
- ALL ISOLATORS RATED AT 6.5 Hz RESONANT FREQUENCY ISOLATION
- ECKEL TO PROVIDE CUSTOM VIBRATION ISOLATION DEVICES
- THREE SINGLE FAN POWERED WALL MOUNTED EXHAUST SILENCERS (3 3/4" x 3 3/4" I.D. - 22")
- FAN DESCRIPTION: "DAYTON" FAN, AXIAL, 70 CFM, 115 V
- ONE PASSIVE WALL MOUNTED INLET SILENCER (3"X24" ID - 72")
- JACK PANEL ASSEMBLY C/W ONE VERTICAL ROW OF FOUR PHONE JACKS & ONE VERTICAL ROW OF TWO XLR CONNECTORS
- CARPETING (STONE GATE II (NYLON) RUSSIAN BLUE)
- ELECTRICAL (ALL ELECTRICAL SITE INSTALLATION BY INSTALLERS):
 - POWER SUPPLY: ONE 120 VOLT AC, 15 AMPS CIRCUIT
 - ALL ELECTRICAL IS TO BE SURFACE MOUNTED AND RUN THROUGH WIRE MOLD TRACK
 - 25' LONG - 15AMP POWER CORD
 - TWO STRIPS OF THREE DUPLEX OUTLETS (ONE INSIDE UNIT & ONE OUTSIDE UNIT)
 - TWO DEDICATED DUPLEX OUTLETS FOR FANS
 - TWO CEILING MOUNTED LIGHT FIXTURES EACH WITH THEIR OWN DEDICATED SWITCH & TWO FLUORESCENT LAMPS WITH A COLOR RENDERING INDEX OF 90
 - LAMP DESCRIPTION: "STANDARD" LAMP, PRODUCT # 6380, DESCRIPTION F32T8/50/9/RS/G13/STDESV
 - BALLAST DESCRIPTION: "UNIVERSAL LIGHTING", PRODUCT # B322120RH-A, DESCRIPTION ELECTRONIC BALLAST FOR TWO F32T8 LAMPS
 - EACH LIGHT FIXTURE WILL HAVE ITS OWN BALLAST
 - FOUR SURFACE MOUNTED SWITCHES ON TWO STRIPS, STRIP "A" - SWITCHES 1 & 2 FOR LIGHTS, STRIP "B" SWITCHES 3 & 4 FOR FANS & OUTLETS
 - COLOR: STD, ECKEL BEIGE

REVISIONS

NO.	DATE	DESCRIPTION
1	10/11/2008	PANEL CONFIGURATION CHANGED, WINDOW NOTED AND LOCATION CHANGED, PINKIE SILENCER CHANGED TO 30", WINDOW PANEL CHANGED TO 47"

PROPRIETARY NOTICE: This document contains proprietary information of Eckel Industries of Canada Limited, and neither the document nor said proprietary information shall be published, reproduced, copied, disclosed, or used for any purpose without the express written permission of a duly authorized representative of said company.

ECKEL INDUSTRIES OF CANADA LIMITED
P.O. Box 776, Morrisburg, Ontario K0C 1X0
Phone (613) 543-2967 Fax (613) 543-4173

CUSTOMER: TEXAS STATE LIBRARY			
PROJECT: C-SERIES - C-14 MOD REV			
TITLE: STANDARD OVERALL			
SCALE: 1" = 1'	DRAWN BY: -	DATE: -	SHEET NO.: 01
PROPOSAL: P-2023B	PROPOSAL DATE: NOV 15/08	DRAWN BY: B. LEITNER	SHEET NO.: 01
CHK BY:	APP'D BY:	DATE:	